

SPECIAL DISTRICT PUBLIC DISCLOSURE DOCUMENT

RIVERWALK METROPOLITAN DISTRICT NO. 3

As required pursuant to Section 32-1-104.8 of the Colorado Revised Statutes (“**C.R.S.**”) this Public Disclosure Document has been prepared by Riverwalk Metropolitan District No. 3 (the “**District**”) to provide information regarding the District.

DISTRICT’S POWERS

The District was formed contemporaneously with Riverwalk Metropolitan District No. 1 and Riverwalk Metropolitan District No. 2 (together with the District, the “**Districts**”). The powers of the District as authorized by Section 32-1-1004, C.R.S., and under the Consolidated Service Plan of the Districts, as approved by the City Council of the City of Glendale, Colorado (“**City**”) on August 13, 2012, are to provide for the acquisition, construction, installation, and completion of certain Public Improvements (which term is defined in the Districts’ Service Plan) and related operation and maintenance services within and without the boundaries of the District as such power and authority is described in the Special District Act, and other applicable statutes, common law and the Constitution, subject to the limitations set forth in the Districts’ Service Plan.

DISTRICT’S SERVICE PLAN

The Districts’ Service Plan, which can be amended from time to time, includes a description of the District’s powers and authority. A copy of the Districts’ Service Plan is available from the Division of Local Government in the State Department of Local Affairs (“**Division**”).

The District is authorized by Title 32 of the Colorado Revised Statutes to use a number of methods to raise revenues for capital needs and general operations costs. These methods, subject to the limitations imposed by Section 20 of Article X of the Colorado Constitution (“**TABOR**”), include issuing debt, levying taxes, and imposing fees and charges. Information concerning District directors, management, meetings, elections, and current taxes are provided annually in the Notice to Electors described in Section 32-1-809(1), C.R.S., which can be found at the District office, on the District’s website, on file at the Division, or on file at the office of the Clerk and Recorder of Arapahoe County.

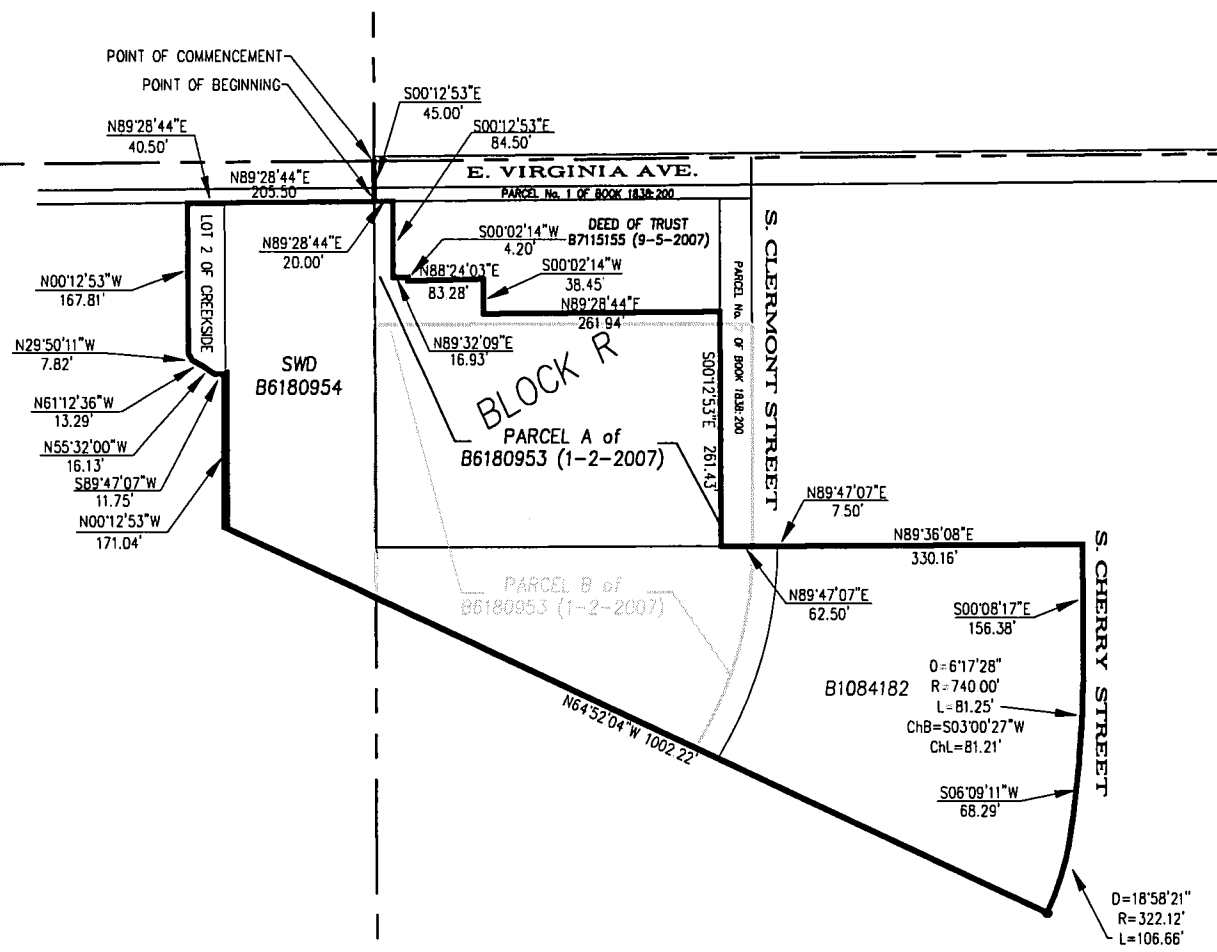
DISTRICT MAP

A map of the District’s boundaries is attached hereto as **Exhibit A**.

Dated April 18, 2023.

EXHIBIT A

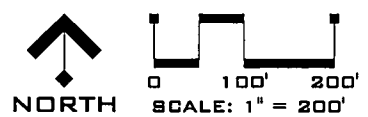
District Map



RECEIVED

JAN 29 2013

District Area: 364,297 s.f (8.363 acres) DIV OF LOCAL GOVERNMENT



PROJ #: 09.0270
 DATE: 08/10/12
 REV #:
 ASI #:

RIVERWALK
METROPOLITAN DISTRICT No. 3

GLENDALE, COLORADO

CLC ASSOCIATES
 8480 E. ORCHARD RD.
 SUITE 2000
 GREENWOOD VILLAGE
 COLORADO 80111
 P 303 770 8600
 F 303 770 2348
 CLC@800.COM
 ARCHITECTURE
 ENGINEERING PLANNING
 LANDSCAPE ARCHITECTURE
 LAND SURVEYING



SHEET 1/1

EXHIBIT TO ACCOMPANY LEGAL DESCRIPTION